



antelopes

MATERIALS:

P & B SUPERIOR DOUBLE KNITTING. 14 ozs.
Black. (34—14 ozs.) (36—16 ozs.).
4 ply BEEHIVE FINGERING, PATONISED.
1 oz. Black No. 52 (B). 1 oz. Yellow No. 2042 (A).
(all sizes). Two No. 12, two No. 11 and two No. 9
Knitting Needles.

MEASUREMENTS:	Bust	32 ins.	34 ins.	36 ins.
Length from top of shoulder	19 "	19 "	19 1/2 "	
Length of sleeve underarm seam	17 "	17 "	17 "	

Tension: Double Knitting—5 1/2 sts. and 8 rows=1 inch with
No. 9 needles.
Beehive Fingering—8 sts. and 10 rows=1 inch with
No. 11 needles.

Check tension—see page 40.

The instructions are written for size 32. Sizes 34 and 36 are written
in brackets thus:—().

FRONT: With Double Knitting and No. 11 needles cast on 84
sts. (34—90 sts.) (36—94 sts.). Work 3 1/2 ins. ribbing (K1. P1).
Change to No. 9 needles and continue even in Stocking st. until
work measures 12 ins. from beginning ending with purl row. (all
sizes).

To shape armholes: Cast off 3 sts. (34—4 sts.) (36—5 sts.)
beginning next 2 rows, then dec. 1. st. each end of needle every
alternate row to 70 sts. on needle. (34—70 sts.) (36—74 sts.).
Continue even until armhole from first shaping measures 2 ins.
(34—2 ins.) (36—2 1/2 ins.) ending with purl row. Cast off.

BACK: Work exactly as given for Front to 70 sts. on needle.
(34—70 sts.) (36—74 sts.). Continue even in Stocking st. until
armhole from first shaping measures 7 ins. (34—7 ins.) (36—
7 1/2 ins.) ending with purl row.

Next row: Cast off 20 sts. (34—20 sts.) (36—22 sts.). loosely
K30. Cast off remaining sts. loosely. Leave the 30 sts. on spare
needle. (all sizes).

SLEEVES: (Sizes 32 and 34 are written exactly the same).

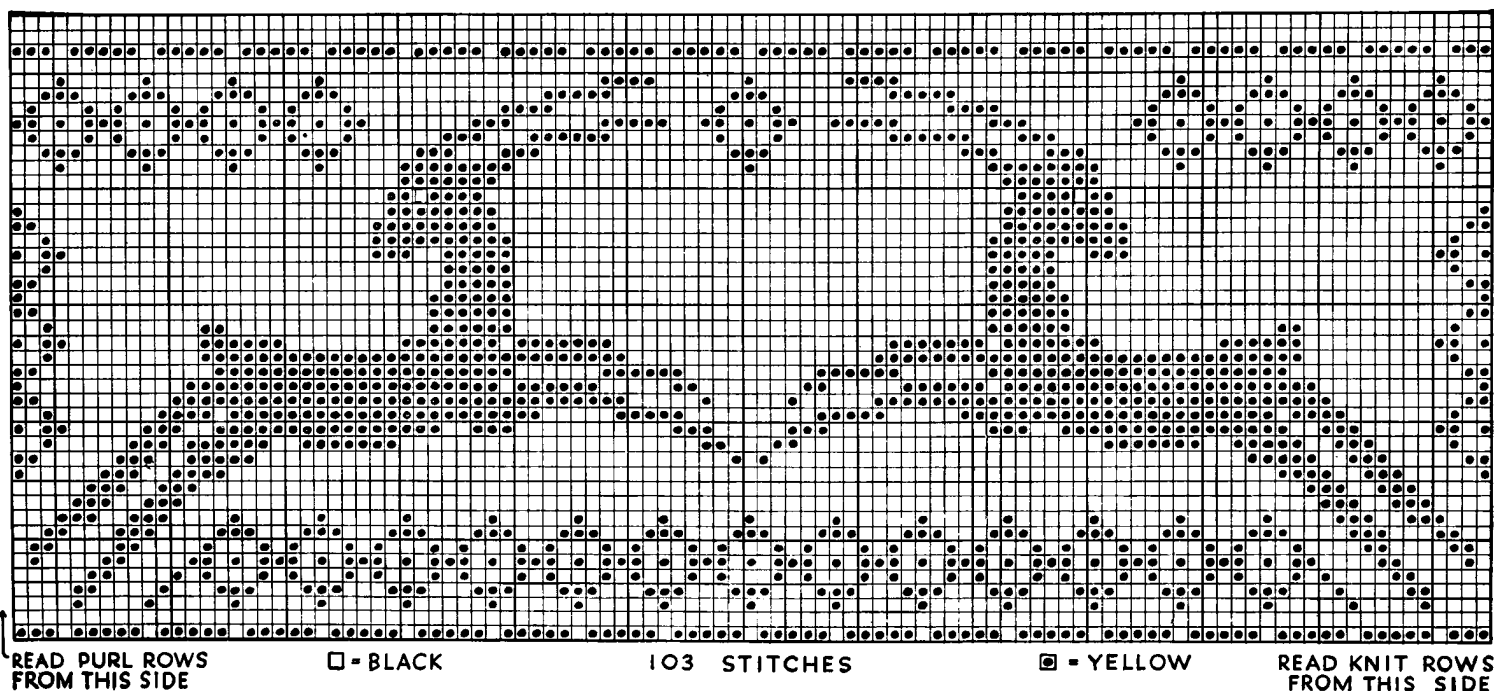
With Double Knitting and No. 11 needles cast on 40 sts. (all
sizes). Work 2 1/2 ins. ribbing (K1. P1). Next row: K4. *Inc.
1. st. in next st. K5. Repeat from * to end of row. (46 sts. on
needle). Change to No. 9 needles. Next row: K1. Purl to last
st. K1. Continue in Stocking st. inc. 1. st. each end of needle
on 5th and every following 8th row to 66 sts. on needle. (36—
72 sts.). Continue even until sleeve measures 17 ins. from begin-
ning. or desired length. (all sizes), ending with purl row.

To shape cap: *Cast off 2 sts. beginning next 2 rows, then 1.
st. beginning following 2 rows.* Repeat from * to * to 12 sts. on
needle. (all sizes). Next row: (K2tog.) 6 times. Next row:
K1. P4. K1. Work 3 1/2 ins. even in Stocking st. on these 6 sts.
ending with purl row. Break wool. Leave these 6 sts. on safety
pin. Work 2nd sleeve to correspond but do not break wool.

NECKBAND: With Double Knitting wool and No. 9 needles
knit across the 6 sts. of 2nd sleeve. Cast on 30 sts. (for front of
neck to be sewn to top of yoke). Knit across the 6 sts. of other
sleeve. Knit across the 30 sts. at back of neck. 72 sts. on needle.
(all sizes). Work 2 1/2 ins. ribbing (K1. P1). Cast off loosely in
ribbing.

THE ANTELOPE YOKE: With (B) Fingering wool and No.
12 needles cast on 103 sts. (all sizes). 1st row: Knit. 2nd row:
K1. Purl to last st. K1. Join (A). Work in Fair Isle Knitting,
see page 39, being careful to read knit rows from right to left
and purl rows from left to right, work first two rows from Chart,
see below. Change to No. 11 needles and continue working from
Chart, changing to No. 12 needles for last 4 rows. Cast off.

TO MAKE UP: Press all pieces carefully. Sew the yoke along
the cast-off edge of the Front. Sew side and sleeve seams. Sew
in sleeves. Sew the shoulders and neck in position.





antelopes... See opposite page